



# Department of Life & Environmental Sciences

**BSc Geography**

UCAS code: F800

Dr Marin Cvitanovic, Programme Leader

#BUopenday  
#belongatbu

# Contents of this talk

- Key features of the Geography course
- Subjects
- What to expect
- Transferable skills and experience (employability)

# Common elements of our courses

- Scientific education and analytical skills
- Strong emphasis on transferable skills and employability
- Two 5 week placements (end of 1<sup>st</sup> and 2<sup>nd</sup> year) or optional 30 week placement (3<sup>rd</sup> year)
- Residential field course in UK (1<sup>st</sup> year) plus optional international field course (2<sup>nd</sup> year)
- Independent research project (3<sup>rd</sup> year)



# Bournemouth University and BSc Geography Excellence

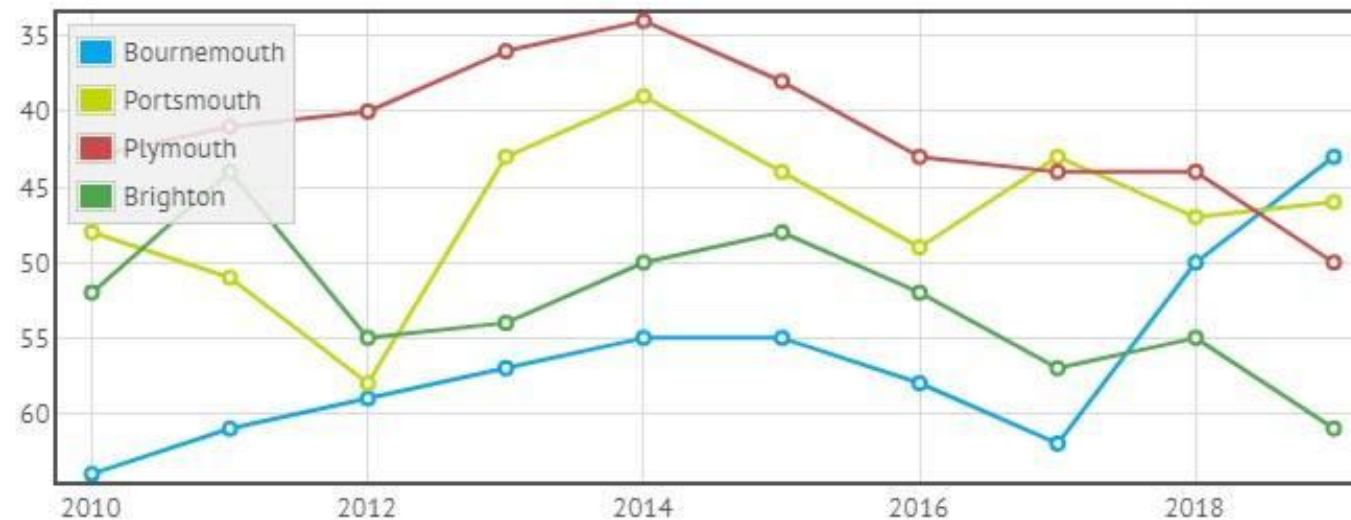
- BU was awarded **Silver** in the **Teaching Excellence Framework (TEF)** in 2017
- Silver: "*provision is of high quality, and significantly and consistently exceeds the baseline quality threshold expected of UK Higher Education*"



# Bournemouth University and BSc Geography Excellence

- The most recent “*The Complete University Guide*” (2019) ranks Bournemouth University’s Geography and Environmental Sciences Subject at 43<sup>rd</sup> place in the UK (3<sup>rd</sup> in the South West) – we have risen 19 places in the last two years only.

CUG Ranking History



# Geography key features

- Great national and international fieldwork opportunities (Curricular and Extra-curricular)
- We applied for Royal Geographical Society course accreditation in September 2018.



Costa Rica



Peak District



Cartagena (Colombia)

# Geography key features

- Benefiting of the outstanding natural surroundings
- World Heritage Site
- Biodiversity hotspot
- National Parks and Nature Reserves



Local beaches



Jurassic Coast World Heritage Site



New Forest National Park



Poole Harbour Special Protection Area

# Focusing on skills development and fieldwork



Landslide management



Mapping skills



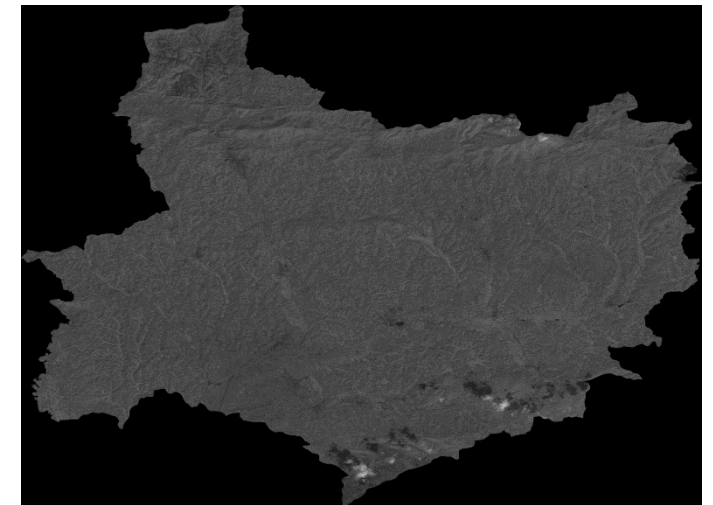
Marine surveys



Grassland surveys



Topographic surveys

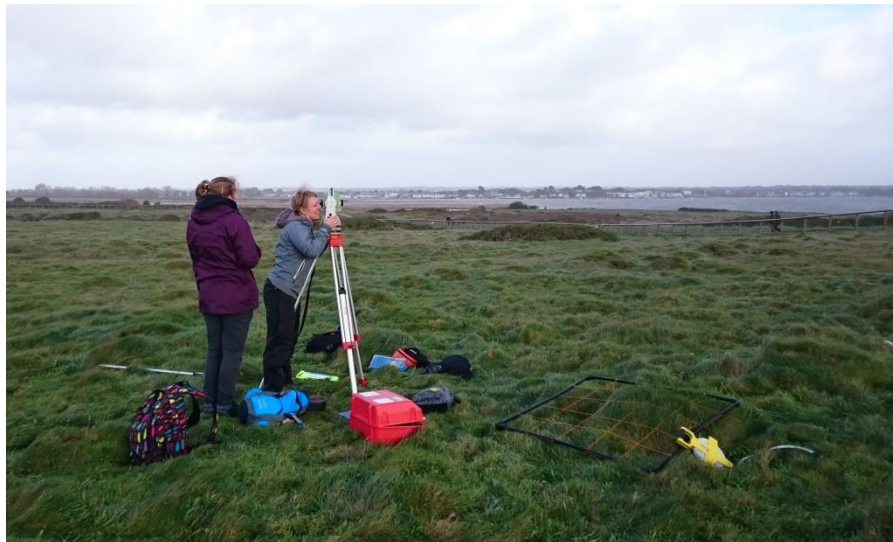


Remote sensing



# Facilities and equipment

Including new undergraduate teaching and research laboratories and generously equipped field store



# Geography key features

## Embedding employer-values

- Competence in communication,
- Team work/collaboration,
- Planning and organising,
- Analytical thinking and problem solving,
- Personal effectiveness,
- Research, managing information,
- Information technology,
- Numerical interpretation

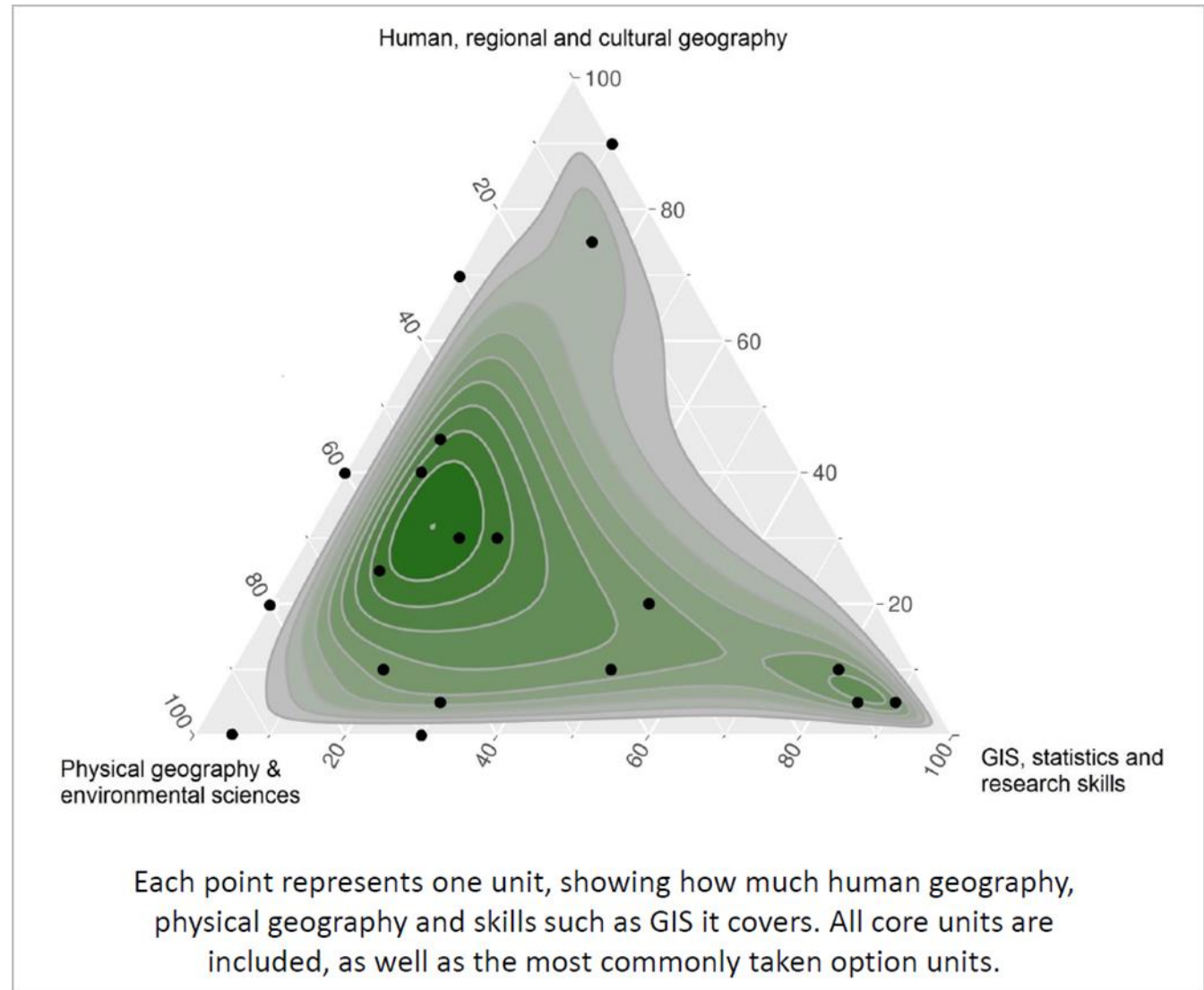


Sustainability policy at the local Wessex Water sewerage treatment plant

92.3% of BU graduates were in work in their chosen careers or in further study six months after graduating, HESA 2016

# Geography key features

- Research-led teaching and scientific underpinning of courses
- Lecturers active in their areas of research and enthusiastic about their subjects
- Staff with diverse interests



# First Year (all core units)

- **Geographic Research Skills**

- What is the scientific method
- How to do simple data analysis
- How to write a report

- **Practical skills in Geography**

- Field surveying
- Social survey methods
- Working with spatial data and mapping



# First Year (all core units)

- **Physical Geography**

- Plate tectonics in macro-scale geography
- Earth's atmospheric system
- Main geomorphological land-systems in the UK

- **Human Geography**

- Society and space
- Urban and rural geography
- Politics, identities, nationalism



# First Year (all core units)

- **Earth and Society**

- Physical impacts of glacier retreat
- Urbanization, transport & the environment
- Natural hazards

- **Residential Field Trip**

- Application of skills learned during the year
- Landslides, biogeography and rural life
- One week in the Peak District



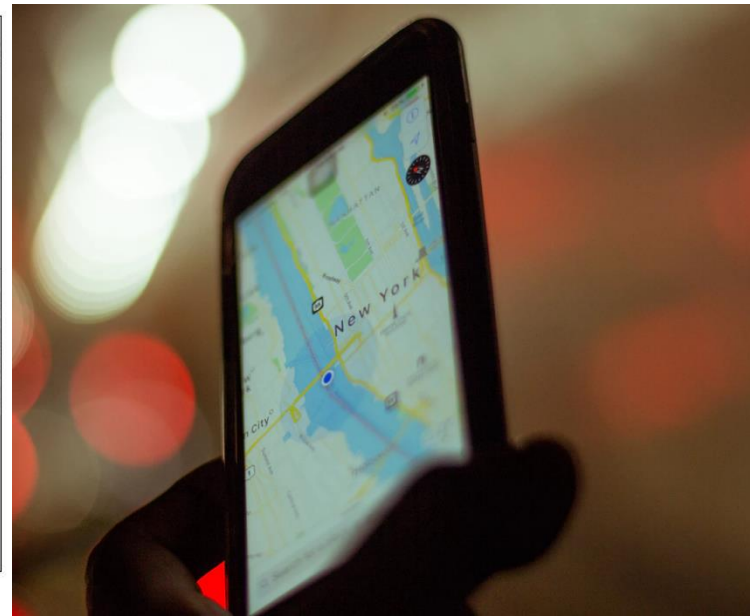
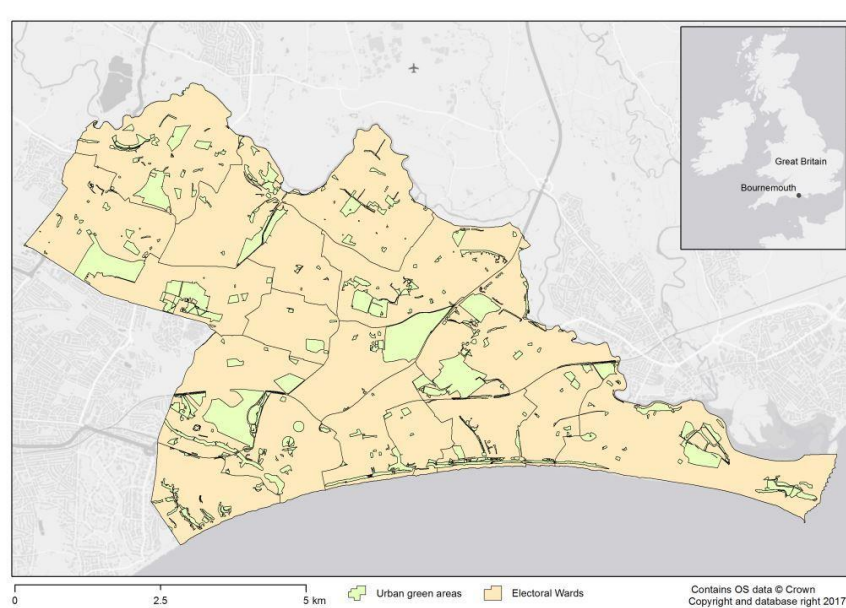
# Second Year (4 core units)

- **Geographic Information Systems**

- GIS project design and implementation
- Data capture and analysis
- Data presentation as cartographic maps

- **Marine Geography**

- Coastal and marine environments
- Drivers of coastal and marine environmental change
- Integrated coastal management



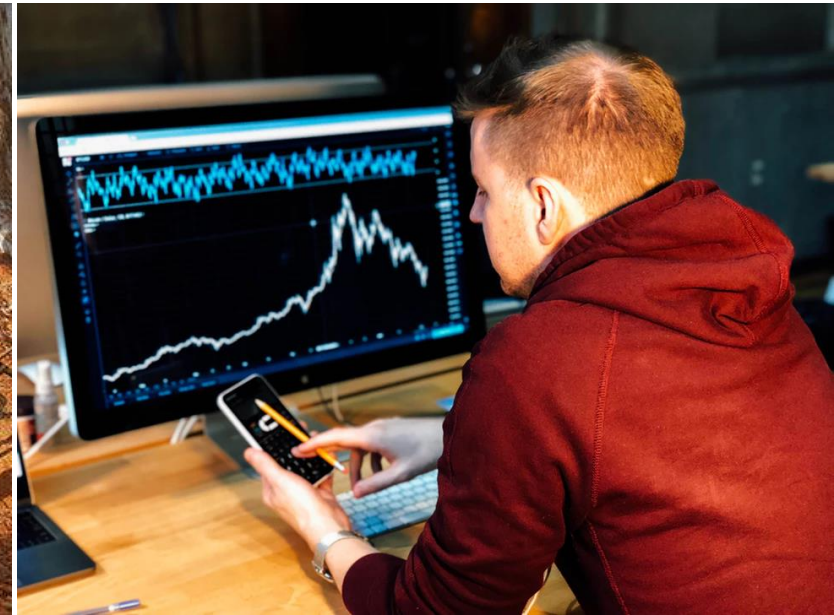
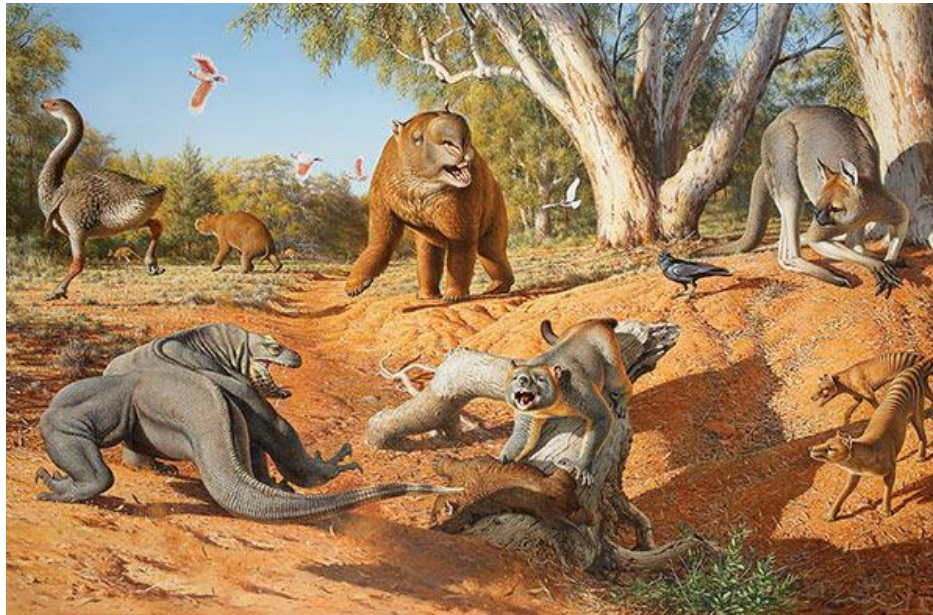
# Second Year (4 core units)

- Quaternary Environments

- Reconstructing past environments
- Effects of climate change on biodiversity
- Can the past be the key to the future?

- Advanced Skills in Geography

- Quantitative and qualitative methods
- Introduction to statistics
- Developing a research proposal





# Second Year Optional Units (choose 2)



International Field Trip



Environmental and Societal Challenges



Environmental Pollution



Ecosystems

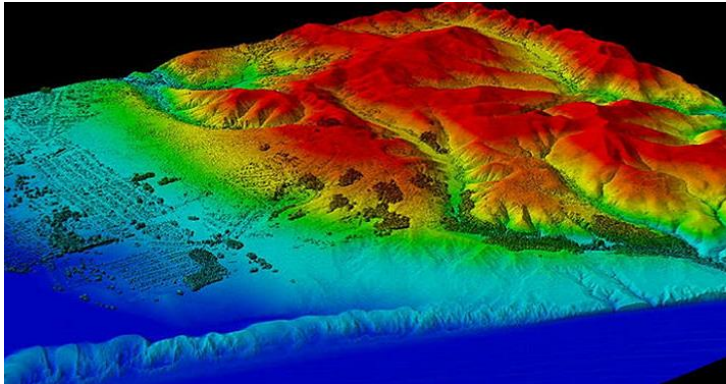


Globalization and marginalization



Applications of Environmental Sciences

# Third Year Optional Units (choose 4)



Environmental Remote Sensing



Earth Surface Processes and Landforms



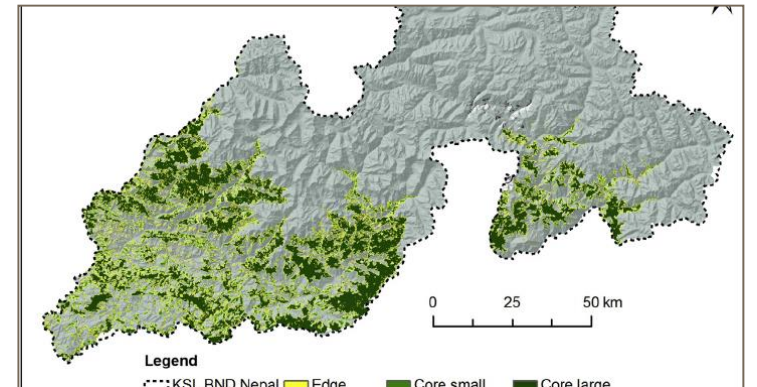
Biological Oceanography



Emergence and Extinction



Topics in Wildlife Conservation



Applied Biogeography

# Third Year Optional Units (choose 4)



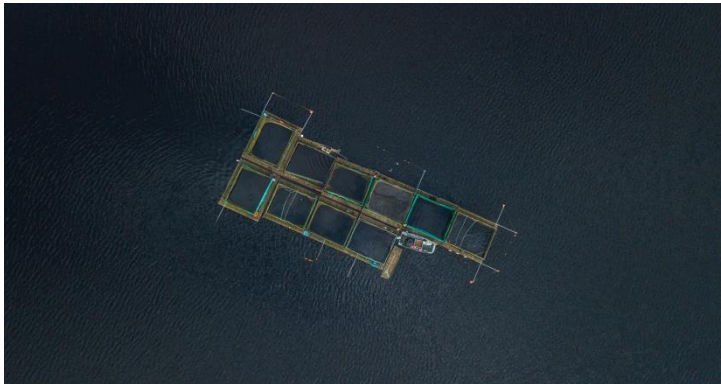
Environmental Law and Management



Globalization and Sustainable Development



Cultural Ecology



Marine Conservation



Climate and Environmental Change



Freshwater Resource Management

# Spend a semester abroad

- University of Malta (BA Geography)
- One semester during your second year
- ERASMUS+ scheme (tuition fee covered & eligible for a scholarship)



# Placements

- Compulsory part of your studies at BU
- A dedicated placement co-ordinator
- Series of lectures (timetabled!)
- Careers & Employability Service



# Importance of the work placement

**“There's no substitute for practical experience!**

Two thirds of employers believe gaining practical experience is the most valuable step you can take to improve your employment prospects. Practical experience brings advantages that nothing else can match.”

*(Source: 2010 CBI/EDI Education and Skills survey).*

# Example placements

- **Survey Assistant** - Hillcrest Surveys Ltd, Bournemouth
- **Marine Licensing placement** - Marine Management Organisation, Newcastle
- **Waste Awareness Office** - Bournemouth Borough Council
- **GIS analysis** - Halcrow, Abu Dhabi looking at coastal management and development using GIS
- **Conservation Ranger** - National Trust, Sissinghurst Castle, Cranbrook
- **Research assistant** - Forest Research Centre, Farnham
- **Carbon Management Officer** - Poole Borough Council

# Feedback on placements

*“The best aspect of the placement is achieving a pay rise and acknowledgement for the hard work I have done resulting in the opportunity to work for the company next year and a position after university full time. I have hugely developed my professional confidence and communications skills.” (the student)*

*“Once again, we've been really happy with [the student's] work and the commitment he has shown to what is a demanding job, particularly over the summer. This year he has also been writing reports for me and I've been impressed with the standard of his work which has been a massive help to me in managing my own work load. I suppose the biggest compliment we can pay is that we will be offering him a permanent job all being well when he's completed his studies next year.” (placement host)*



# Life & Environmental Sciences International Fund Placement Opportunities Fund



# Student Research Teams for project team-based experience



## Perceptions of urban planting for pollinators

- 10 hours per week semester 2 - flexible
- £9.35 per hour, work in a team of three
- Apply by 9<sup>th</sup> December, interview by Skype

<https://mycareerhub.bournemouth.ac.uk/students/jobs/detail/658335/research-assistant-group-publi>



# Other ways you can get involved at BU and build your CV

## Department Silver Award for Green Impact



Green Impact is an environmental accreditation delivered by the National Union of Students (NUS)

## Student societies



## Undergraduate conferences



**BU**  
Bournemouth  
University

### 2015 SURE Conference

- Showcasing Undergraduate Research Excellence -

Open to all BU UG Students and recent graduates.

Showcase work you have done for:  
Coursework - Placement - Dissertation or Volunteering.

Submit your abstract before  
Monday January 5 2015 at  
[surebu.org.uk](http://surebu.org.uk)

For more information contact:  
[sure@bournemouth.ac.uk](mailto:sure@bournemouth.ac.uk)

We are **SURE**. What about you?

*“I wanted to let you know that one of the key things [...] impressed [in the interview] was the SURE conference. It got me the job I have now... The conference gave me the confidence to think my work was good enough to share, which has since proved invaluable.”*

REAL-WORLD ENVIRONMENTAL ISSUES ADDRESSED WITH PRACTICAL EXPERIENCE AND SCIENTIFIC EXPERTISE



“Working with BUG helped develop my career opportunities. Now I get to help others develop theirs!”  
Josie, now a lecturer at Sparsholt College

BOOST  
YOUR CV!



“I had a fabulous time working with BUG – being able to learn and put new skills into practice has really helped to define my career development” Ash, BSc Biological Sciences



“A fantastic opportunity to get real-world experience with the BUG consultancy team. A really enjoyable perk to my time at BU!” Catie, PhD student



**BU Global Environmental Solutions (BUG) is the environmental consultancy arm of the Faculty of Science and Technology at Bournemouth University, located within the Department of Life and Environmental Sciences.**

# Creating Global Talent

## Developing your talent through

- Work & study abroad
- Placements support
- Careers & Employability support
- Volunteering opportunities
- Global BUddies
- Global Talent Programme



Opportunities in virtually any environment-related area:

- Planning
- Consultancy
- Tourism
- Teaching
- Government
- Land surveying
- Environmental regulation
- Energy sector
- Research degree



# Example destinations

- **Environmental Consultant** - Nautica Environmental Associates, United Arab Emirates
- **Asset Mapping Officer** - London Borough of Camden
- **Researcher** - Acre recruitment agency (corporate responsibility and sustainability sector)
- **Environmental Scientist** - Wessex Water
- **Director** - Applied Resilience Ltd, Staines (emergency response support, crisis management, emergency planning and counter terrorism)
- **Marketing and Communications Executive** – Carbon Trust, London
- **Development Assistant** - Aster Homes (development of affordable housing)
- **Trainee land surveyor** -Technics Group, Guildford
- **MSc Climate Change Science and Policy** - Bristol University
- **GIS Technician at Camden Council** (GIS mapping of council estates assets)

# Bespoke induction programme

You will receive a tailored induction programme focused on:

- The transition to university education
- Professional skills
- Personal goal setting
- Strategies for success
- Developing networks
- Extracurricular activities:  
e.g. student clubs & societies, volunteering opportunities





# Academic and personal development throughout your study

- Peer-assisted learning (PAL) sessions
- GROW@BU
- Programme leaders
- Personal tutor
- Student reps
- Student Champion



# Support available

## Academic support

- Disability & Additional Learning Support
- Language Centre
- Library & Learning Support
- Study Support
  - Academic writing
  - Critical analysis
  - Exam and revision techniques
  - Presentations
  - Referencing
  - Avoiding plagiarism

## Health and wellbeing

- Chaplaincy
- Counselling
- Medical Centre

## Dedicated Student Support

## Employability Development Skills

## And much more



# £200m facilities investment



Bournemouth University



**1st**  
award class

UNIVERSITY  
LEAGUE 201

people & planet

# Bournemouth... a great place to study and live



# Your future?



## What's next

- FG04 – a chat with our staff & current geography students (hopefully with some tea, coffee & biscuits)